



# HPE-NS-R-QC

*Random Case Erector Bottom Sealer  
With Quick Changeover*

- Frame is 3/16" steel construction
- Erects and seals a wide range of cases
- Designed for 24/7 operation
- Standard, medium and large frames available
- Polycarbonate guarding package (Custom design requests also available)
- Top and bottom flight lugs guide the cases
- Right-hand or left-hand controls are available
- Flaps can be sealed with glue, tape or a combination of both
- Available tape heads: 3M, Bemis, Intertape, Central and Dekka
- Available glue units: Nordson, ITW

**MARQ**  
PACKAGING SYSTEMS

A division of Marquis Operating Limited Partnership

Proudly  
Associated With:



*This High Performance Random Case Erector from MARQ Packaging features our QC "Quick Changeover" capability for the ultimate efficiency in case erecting.*

*With our Quick Changeover function, you can eliminate operator interface and downtime during case changeovers. Case sizes are pre-programmed into the PLC with a total-control touch screen display and when the stack reaches the infeed hopper, the machine has already automatically adjusted to the new case size.*

*Each knockdown case is automatically pulled from the horizontal-feed hopper, opened by suction cups and held square as the bottom flaps are sealed. Finally, each erected case is dropped onto the takeaway conveyor ready to be filled with product.*

*Optional labelers can be added for the convenience of print-and-apply labeling on your knockdown cases.*

*Talk to a MARQ representative to see why this machine could work best for your application.*

## FOOTPRINT

### Standard Features

- Wiring practices conform to NFPA standards
- Operator friendly design
- Quick changeover
- Fully guarded
- Continuous feed hopper
- UL508A listed electrical panels

### Operational Requirements

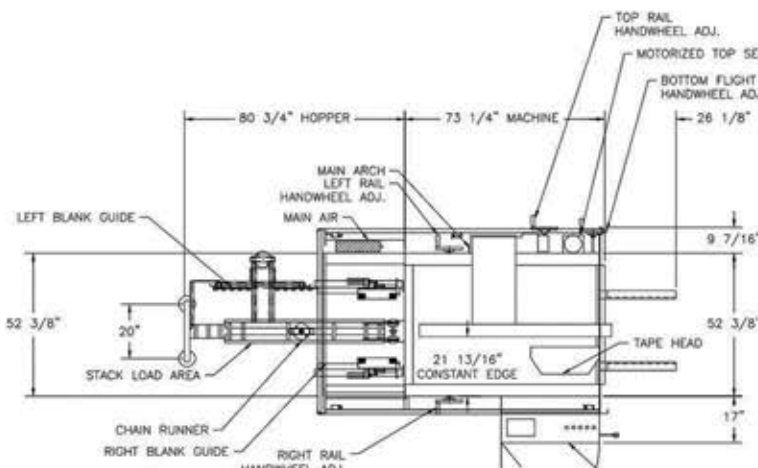


**THREE  
PHASE**



**230/460  
VOLTS AC**

### TOP VIEW



### SIDE VIEW

