



HPE-NS-TABLOCK

Tablock/Tieback Case Erector Bottom Sealer

- Frame is 3/16" steel construction
- Designed for 24/7 operation
- Standard, medium and large frames available
- Available tape heads: 3M, Intertape and Dekka
- Erects and assembles RSC and RSC-Tablock cases
- Optional case turner
- Polycarbonate guarding package (Custom design requests also available)
- Flaps can be sealed with glue or tape
- Right-hand or left-hand controls are available
- Top and bottom lugs guide case through machine
- Available glue units: Nordson, ITW

MARQ
PACKAGING SYSTEMS

A division of Marquis Operating Limited Partnership

MARQ's HPE-NS-Tablock/Tie Back Case Erector Bottom Sealer will automatically fold the top tabbed flaps back against the body of the tablock case prior to erecting. After the flaps have been folded, the case moves forward to be opened with top and bottom vacuum cups. The erected case then moves past the flap folders and into the sealing section where the top bottom flaps are sealed with either hotmelt glue or pressure sensitive.

The erected case is then discharged from the machine in a horizontal position and an optional case turner will upright the case upon discharge. This machine has the ability to run both RSC and RSC Tablock cases via a selector switch. MARQ HPE-NS-Tablock case erectors are available in standard, medium and large frames depending on customer application.

Talk to a MARQ representative to see why this machine could work best for your application.

FOOTPRINT

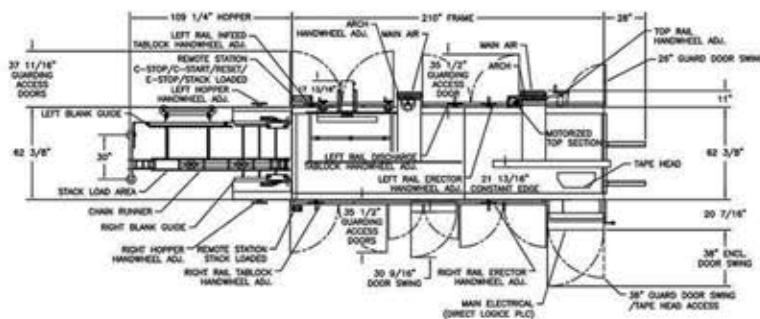
Standard Features

- Wiring practices conform to NFPA standards
- Operator friendly design
- Quick changeover
- Fully guarded
- Continuous feed hopper
- UL508A listed electrical panels

Operational Requirements



TOP VIEW



SIDE VIEW

