



HPE-NS

*Case Erector Bottom Sealer
With Bundle Hopper*

- Frame is 3/16" steel construction
- Erects and seals a wide range of cases
- Designed for 24/7 operation
- Standard, medium and large frames available
- Polycarbonate guarding package (Custom design requests also available)
- Top and bottom flight lugs guide the cases
- Right-hand or left-hand controls are available
- Flaps can be sealed with glue, tape or a combination of both
- Available tape heads: 3M, Bemis, Intertape, Central and Dekka
- Available glue units: Nordson, ITW

MARQ
PACKAGING SYSTEMS

A division of Marquis Operating Limited Partnership

Proudly
Associated With:



MARQ Packaging's Case Erector Bottom Sealer with Bundle Hopper is a design that features added versatility maintaining the high standard of quality and performance expected in a MARQ machine. Its superior style of bundle hopper is easily accessible for adjustments and servicing and reduces the amount of lifting required by the operator.

This horizontal-feed hopper allows cases to be erected with top and bottom vacuum cups to ensure positive erecting of the case. Erecting cases in the horizontal position gives you the added benefit of using opposing vacuum cups to open the case. All flap folding and case handling is done outside the machine, which means that maintenance and changeover is accomplished easily without interference.

Multiple stacks of knockdown cases can be placed onto the hopper where they will automatically feed into the machine. A bottom flight lug chain and one upper flight lug chain convey the case through the erector. MARQ case erectors/sealers are available in standard, medium and large frame models depending on customer application.

Talk to a MARQ representative to see why this machine could work best for your application.

FOOTPRINT

Standard Features

- Wiring practices conform to NFPA standards
- Operator friendly design
- Quick changeover
- Fully guarded
- Continuous feed hopper
- UL508A listed electrical panels

Operational Requirements

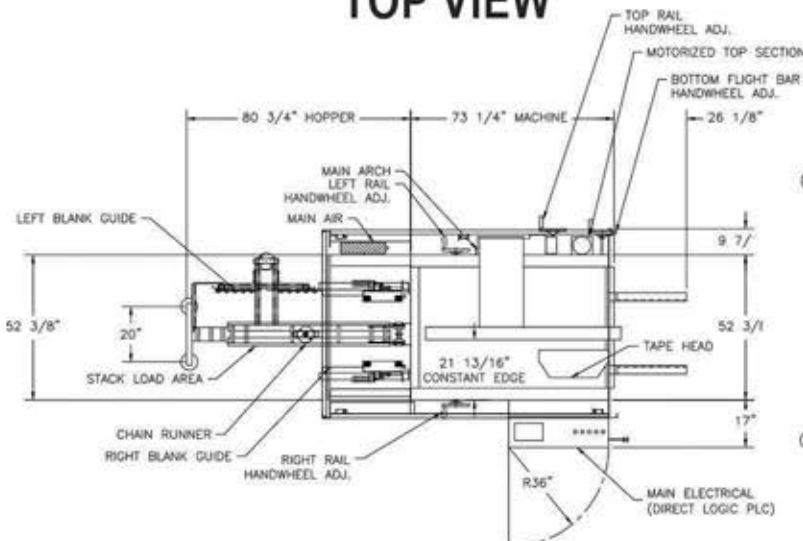


**THREE
PHASE**



**230/460
VOLTS AC**

TOP VIEW



SIDE VIEW

