



# HPR-HS

## *High-Speed Random Case Sealer*

- Frame is 3/16" steel construction
- Closes and seals a wide range of case sizes
- Designed for 24/7 operation
- Can be sealed with hotmelt glue, tape or a combination of both
- Side lug, flight bar, side belt and bottom belt drive systems available
- Self learning mode teaches and stores case dimensions into PLC memory using bar code eraser or light curtain
- Right-hand or left-hand controls available

**MARQ**  
PACKAGING SYSTEMS

*A division of Marquis Operating Limited Partnership*

Proudly  
Associated With:



*Our High Performance High-Speed Random Case Sealer utilizes a barcode reader or light curtain, dependent on the customer's case range. The bar code reader scans the case's barcode sending the coordinates to the servo axis, and the machine adjusts accordingly.*

*The pre-sensing method also distinguishes between "random" or "batch" modes. In "batch" mode, the machine reaches speeds of up to 30 cases per minute depending on size, and in "random" mode, it can reach speeds of 20-plus cases per minute. This machine has the ability to top and bottom seal and is built to withstand 24/7 operation.*

*MARQ random case sealers are available in standard, medium, and large frame models depending on customer applications, as well as the option of side lug, flight or side belt drive.*

*Talk to a MARQ representative to see why this machine could work best for your application.*

## Standard Features

- Wiring practices conform to NFPA standards
- Operator friendly design
- Quick changeover
- Fully guarded
- Continuous feed hopper
- UL508A listed electrical panels

## Operational Requirements



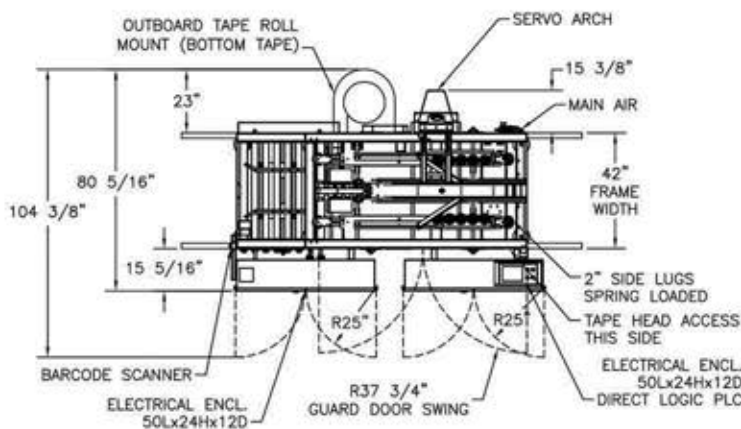
**THREE  
PHASE**



**230/460  
VOLTS AC**

## FOOTPRINT

### TOP VIEW



### SIDE VIEW

