



HPV-FB-144-T-TB

Product Settler with Top & Bottom Sealer

- Frame is 3/16" steel construction
- Designed for 24/7 operation
- Polycarbonate guarding package (Custom design request also available)
- Closes and seals a wide range of case sizes
- Seals top and bottom
- Flight bar transfer system
- 247" dual station top (top & bottom model also available)
- Can be sealed with glue, tape or combination of both

MARQ
PACKAGING SYSTEMS

A division of Marquis Operating Limited Partnership

Proudly
Associated With:



MARQ's Flight Bar Drive Product Settler with Top & Bottom Sealer settles and seals volume-filled or bagged products, or any product with in-transit settling issues. This machine incorporates controlled vibration principles which MARQ has applied to a great variety of products and industries.

This machine helps eliminate in-transit settling under controlled conditions, reducing case height in some instances by 2 or more inches, resulting in corrugated cost savings and an increased number of cases per load.

Available in a 144" (tape) or 205" (glue) frame, this machine will seal top and bottom, and it features simplified flap folding, easy adjustability, and a heavy duty welded 3/16" steel frame with a powder coated finish. As with all of MARQ's equipment, this settler-sealer is built to withstand the daily rigors of 24/7/365 applications

Optional Dual Station top and bottom taper models are available in 247" length and come with two 80" vibrator platters. The first half of the machine uses open vibration, and the second half utilizes top spring-loaded compression while settling.

Talk to a MARQ representative to see why this machine could work best for your application.

FOOTPRINT

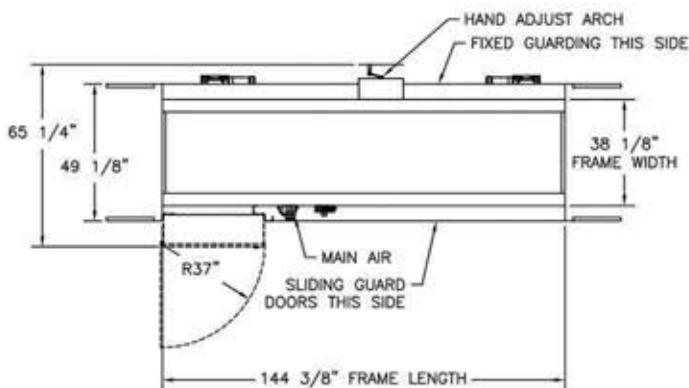
Standard Features

- Wiring practices conform to NFPA standards
- Operator friendly design
- Quick changeover
- Fully guarded
- Continuous feed hopper
- UL508A listed electrical panels

Operational Requirements



TOP VIEW



SIDE VIEW

